

2.1.6. THE TRANSFER OF ROCK PHYSICS INFORMATION ON ELECTRONIC SUPPORT AND DATABASE VALIDATION

The database concerning the magnetic properties of the main geological formation cropping out in the study area has been constructed mainly based on the inspection of the geophysical literature on the study area.

The next figure shows the location of the outcrops sampled for rock-magnetism studies in Harghita Mts., already reported in 2013 for that have been done additional studies in 2014.

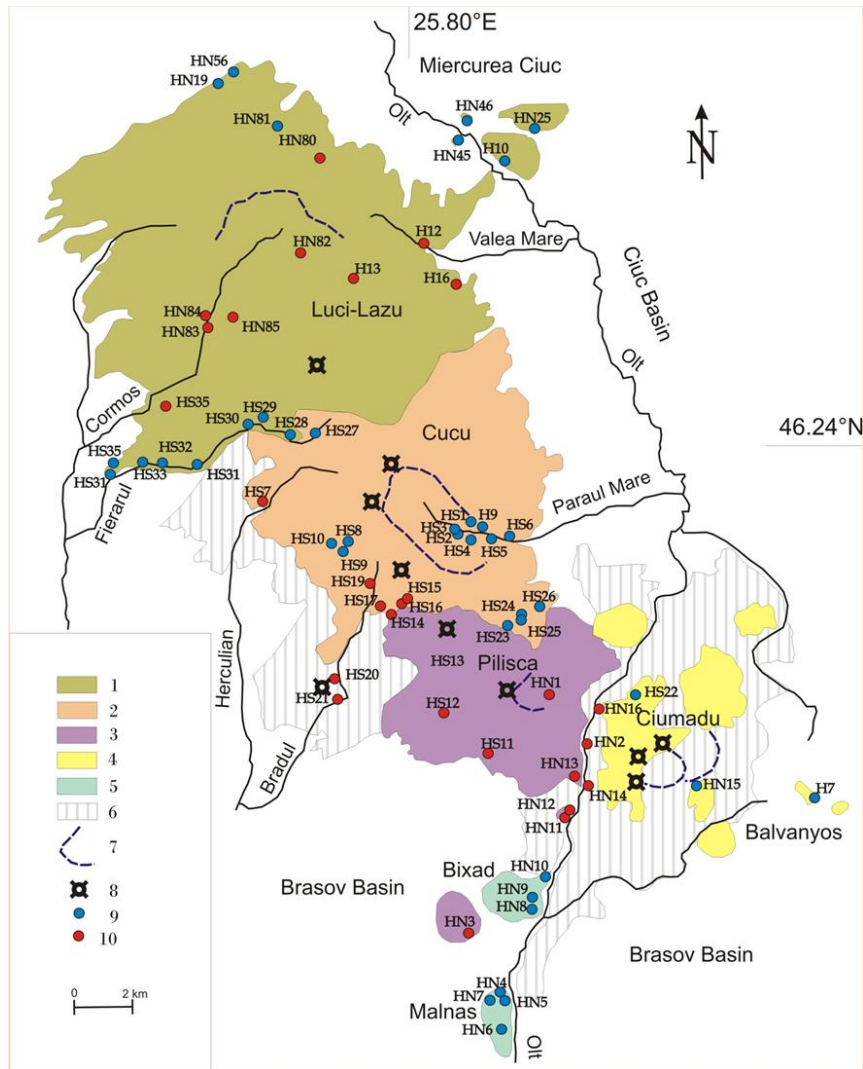


Fig. 9. Location of the sampling points within South Harghita Mts. The geological background is modified after Seghedi et al., 1987.

1. Volcanic structures Luci-Lazu și Șumuleu-Ciuc (4.3 (5.1?)– 3.6 Ma);
2. Volcanic structure Cucu (2.8–2.2 Ma);
3. Volcanic structure Pilișca (2.5–1.5 Ma);
4. Volcanic structure Ciomadul (0.6–0.2 Ma) and the extrusive dom Balványos (0.9–1.0 Ma);
5. Intrusive domes Malnaș și Bixad (2.2–1.4 Ma);
6. Volcanoclastic rocks;
7. Crater;
8. Eruption centre;
9. Sampling point with positive geomagnetic inclination;
10. Sampling point with negative geomagnetic inclination;