

# Negligible surface uplift following foundering of thickened central Tibetan lower crust

Yunchuan Zeng<sup>1,2</sup>, Mihai N. Ducea<sup>2,3</sup>, Jifeng Xu<sup>1,4\*</sup>, Jianlin Chen<sup>4</sup> and Yan-Hui Dong<sup>4†</sup>

<sup>1</sup>School of Earth Sciences and Resources, and State Key Laboratory of Geological Processes and Mineral Resources, China University of Geosciences, Beijing 100083, China

<sup>2</sup>Department of Geosciences, University of Arizona, Tucson, Arizona 85721, USA

<sup>3</sup>Faculty of Geology and Geophysics, University of Bucharest, 010041 Bucharest, Romania

<sup>4</sup>State Key Laboratory of Isotope Geochemistry, Guangzhou Institute of Geochemistry, Chinese Academy of Sciences, Guangzhou, 510640, China

## ABSTRACT

**This study used clinopyroxene (cpx) compositions and zircon Hf-O isotopes of Eocene adakitic rocks (EARs) from the Qiangtang block to resolve the mechanism(s) responsible for the formation of the central Tibetan Plateau. The two leading and opposing hypotheses for the origin of these rocks are (1) partially molten foundered lower crust, and (2) partial melting of continentally subducted upper crust. The consensus is that some crustal sources within the mantle have reached eclogite facies, while evidence remains insufficient. Reverse zonation for cpx in high Mg# andesitic samples shows a low Mg# core with lower Sr and Sr/Y than the high Mg# rim, suggesting derivation of parent magma by interaction between some eclogite-derived felsic melts and mantle peridotite. Overall, the mantle-like zircon  $\delta^{18}\text{O}$  (mean value of  $\sim 5.9\%$ ) and  $\epsilon_{\text{Hf}}(t)$  (up to +6.7) values argue for a mafic source rather than buried upper-crustal rocks. Given the EARs were formed within a short time span after the end of crustal shortening, the original felsic melts were most likely derived from the foundered and eclogitized lower crust. The foundering process explains the early Eocene low-relief topography and the intermediate, eclogite-free modern crustal composition of central Tibet. Surface uplift as a response to lithosphere removal, however, was likely negligible, based on various lines of evidence, including sediment provenance, isotope paleoaltimetry, and thermochronology, perhaps because the central Tibetan crust was weak.**

## INTRODUCTION

The driving mechanism(s) of thickening and uplift of the Tibetan crust during Neotethyan subduction termination and the subsequent India-Asia collision is(are) of great significance to our understanding of orogenesis. Studies show that, in the early stages of collision, crustal shortening and thickening were localized in the hinterland, i.e., central Tibet, far from the collision front, to form an early Paleogene protoplateau (Fig. 1; for reviews, see Wang et al. [2014] and Kapp and DeCelles [2019]). The lower modern central Tibetan crust has an intermediate-felsic average composition

and is eclogite-free, as inferred from the low seismic velocities ( $V_p < 6.6$  and  $V_s < 4.25$  km/s; Galve et al., 2006; Yang et al., 2012), and limited crustal xenoliths in Pleistocene lavas (Hacker et al., 2000). Extensive Eocene volcanic rocks with minor intrusive equivalents formed abruptly after a magmatic lull since the Early Cretaceous in the Qiangtang block (QB), a key part of the protoplateau (Fig. 1), and they show chemical similarities with adakitic rocks (referring to intermediate-felsic high Sr/Y and La/Yb rocks; Castillo, 2012). These Eocene adakitic rocks (EARs) provide us prime access to the deep processes responsible for formation of the protoplateau.

There are two opposing hypotheses for the formation of these distinct rocks in central Tibet. The first hypothesis is that the EARs were partial melts of continentally subducted flysch-rich

upper crust at mantle depth, while the southward subduction of Asian lithosphere beneath central Tibet kinetically drove protoplateau formation (Tapponnier et al., 2001; Wang et al., 2008; Replumaz et al., 2016). The opposing hypothesis is that the crust was shortened, thickened, and uplifted by plate stress from India-Asia collision, and then the thickened lower crust (presumably turned into eclogite) foundered to cause further uplift and partially melted to generate the EARs (Chen et al., 2013; Chapman et al., 2018; Kelly et al., 2020). The two hypotheses fundamentally impact our overall knowledge of India-Asia continental tectonics (see Replumaz et al. [2016] and Kelly et al. [2020], respectively).

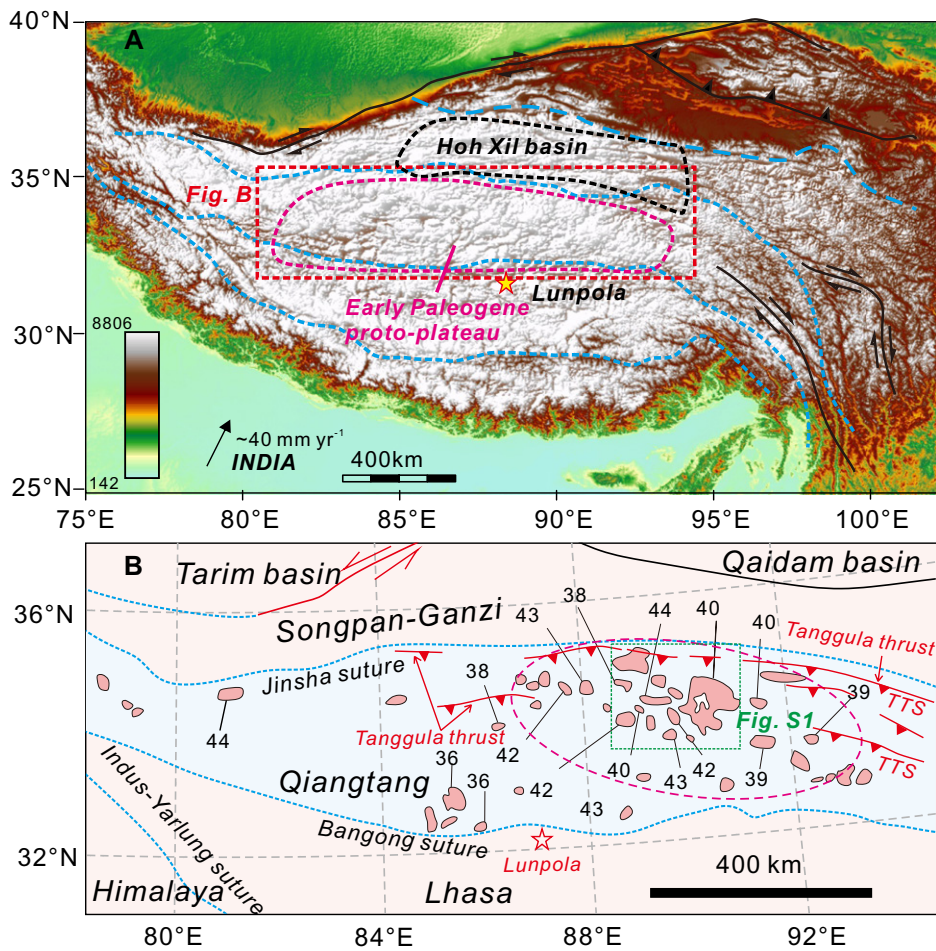
Here, we present major- and trace-element compositions of clinopyroxene (cpx) and zircon Hf-O isotopic data for the EARs to test between the two end-member hypotheses. The compositional variation in reverse cpx and mantle-like zircon  $\delta^{18}\text{O}$  values provide strong evidence for the lower-crustal foundering model, but we contend the surface uplift associated with lithosphere removal was negligible, perhaps because the crust was weak.

## GEOLOGICAL SETTING

As the central part of the Himalayan-Tibetan orogen, the QB is a wide plateau with thickened continental crust of 60–70 km and high but flat topography (average  $>4800$  m; Fig. 1; Owens and Zandt, 1997; Yang et al., 2012). It underwent two pre-Cenozoic collisional events, i.e., with Songpan-Ganzi block (SG) in the Late Triassic and with the Lhasa block in the Early Cretaceous, forming the Jinsha and Bangong sutures, respectively (Fig. 1; Kapp and DeCelles, 2019). At the northern boundary of the protoplateau

\*E-mail: [jifengxu@gig.ac.cn](mailto:jifengxu@gig.ac.cn)

†Current address: Key Laboratory of Submarine Geosciences, Second Institute of Oceanography, Ministry of Natural Resources, Hangzhou 310012, China



**Figure 1. (A)** Tectonic outline of the Himalayan-Tibetan Plateau. Spatial delineation of the proto-plateau is based on Wang et al. (2014). **(B)** Sketch map showing distribution and magmatic age (black labels) of Eocene adakitic rocks (EARs; after Chapman et al., 2018).

(Fig. 1), Tanggula thrust belt movement has shortened the QB crust up to 50% and formed the Hoh Xil foreland basin (Staisch et al., 2014; Li et al., 2017; Kapp and DeCelles, 2019). Recent combined studies of field and structural geology, basin analyses, and stratigraphic analyses have shown that the timing of thrusting likely ended ca. 50 Ma, following a major phase of deformation and uplift of the QB crust at ca. 54 Ma (Li et al., 2017; Jin et al., 2018; Kapp and DeCelles, 2019).

Early Paleogene magmatic rocks in the QB chiefly include EARs and minor small Eocene–Oligocene mafic dikes (Chen et al., 2013). The EARs are widely distributed in the QB but are more concentratedly in the mideastern part, where they form a field covering a total area of ~9000 km<sup>2</sup> (Fig. 1B). The strata exposed there are composed of mainly Mesozoic shallow-marine and minor Cretaceous–Paleogene terrestrial rocks. The EARs in this region lie flat and unconformably above the strongly shortened and folded Mesozoic–Lower Paleocene strata and the weakly deformed or undeformed Lower Eocene strata

(Fig. S1 in the Supplemental Material<sup>1</sup>; Kapp and DeCelles, 2019).

#### SAMPLES AND ANALYTICAL RESULTS

In total, 20 andesitic, 20 dacitic, and four rhyolitic samples from the mideastern QB (Fig. 1B; Fig. S1) were collected for geochemical analyses (see the Supplemental Material for petrography, analytical methods, and results). These samples are adakitic according to bulk-rock geochemical compositions; i.e., high SiO<sub>2</sub> (57.25–71.58 wt%), Sr (>415 ppm), Sr/Y (72–215), and La/Yb (18.6–100), and low Y (<15.5 ppm) and Yb (<1.72 ppm) (Fig. 2; Table S3). In addition, 22 samples from Dongyuehu, Luanqinshan, Zhuozishan, and Yuejinla (Fig. S1) present high Mg# (>60) with high Cr (69–314 ppm) and Ni (69–149 ppm) contents, resembling typical primitive andesite (Kele-

<sup>1</sup>Supplemental Material. Experimental methods, Figures S1–S5, and Tables S1–S8. Please visit <https://doi.org/10.1130/GEOL.S.12811868> to access the supplemental material, and contact [editing@geosociety.org](mailto:editing@geosociety.org) with any questions.

men et al., 2014; this broad definition includes dacite and rhyodacite with Mg# >60, so hereafter we refer our samples with Mg# >60 as primitive EARs). Eleven samples (andesite to rhyolite) showed relatively uniform Sr-Nd isotopic values, (<sup>87</sup>Sr/<sup>86</sup>Sr)<sub>i</sub> = 0.7064–0.7078 and ε<sub>Nd</sub>(t) = –6.21 to –2.51, which are within the range of literature data (Fig. 2C).

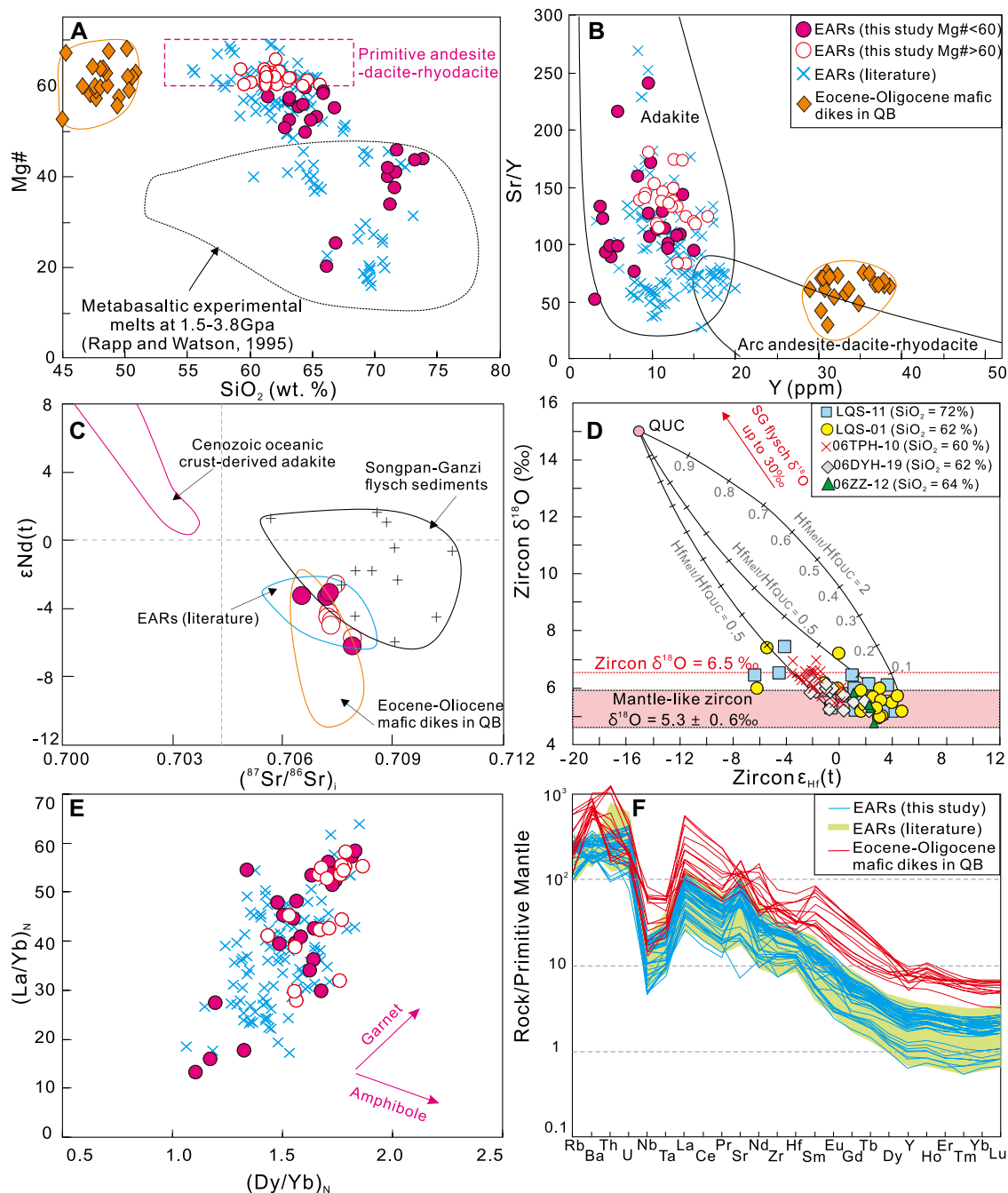
The zircon <sup>206</sup>Pb/<sup>238</sup>U ages of five samples were also consistent with previous results and together suggest a short life span for EAR magmatism (ca. 45–36 Ma, with a distinctive peak at ca. 40 Ma; Chen et al., 2013). The age, morphology (e.g., euhedral to subhedral, homogeneous internal structures; Fig. S3), and high Th/U ratios (0.11–1.81) of the analyzed zircon grains are indicative of a magmatic origin, and thus the measured Hf–O isotopic data represent the primary value precipitating from parent magma. These grains showed slightly variable δ<sup>18</sup>O (4.7‰–7.6‰, with mostly ~5.9‰, and a mean value of 5.9‰ ± 0.2‰) and slightly negative to positive ε<sub>Hf</sub>(t) values (–6.1 to 4.7; Table S2).

Reverse zonation (Fe-rich cores and Mg-rich rims) was observed in some cpx grains from primitive EARs (Fig. 3; Fig. S2). The Mg-rich rims had the same compositions as normal (unzoned) grains. Although the Mg# as well as the Ni and Cr contents increased from the core to rim, the low-Mg# core showed lower Sr, Sr/Y, and Dy/Yb, but higher Y and Yb than the rim. Notably, inverse calculation by using the Fe–Mg exchange and partition coefficient between cpx and melt showed that only the melt equilibrated with the high-Mg# cpx has adakitic features (Fig. 3; Table S6).

#### PETROGENESIS OF THE EARs

Primitive andesites can be produced by crust-derived melts reacting with mantle peridotite or mixing with mantle-derived melts, or by ultralow-degree melting of a shallow hydrous mantle, and those with adakitic affinity require the involvement of garnet ± amphibole during partial melting and/or magmatic evolution (e.g., Xu et al., 2002; Castillo, 2012; Kelemen et al., 2014). The positive correlation between La/Yb and Dy/Yb ratios suggests that the adakitic features of EARs were controlled by garnet, although amphibole fractionation in the magmatic evolution cannot be excluded (Fig. 2E). Additionally, the lower Ba, Sr, Th, and rare earth element contents of the EARs compared with Eocene–Oligocene mafic dikes are in stark contrast with the trend of low-degree mantle melting (Fig. 2F).

The presence of reverse-zoned cpx in primitive EARs implies open-system magma evolution with involvement of two end members, and the key to distinguishing the eclogite-derived melt–mantle interaction from magma mixing models is whether the primitive end member represented by the high-Mg# rim cpx originally had adakitic features. As elaborated before,



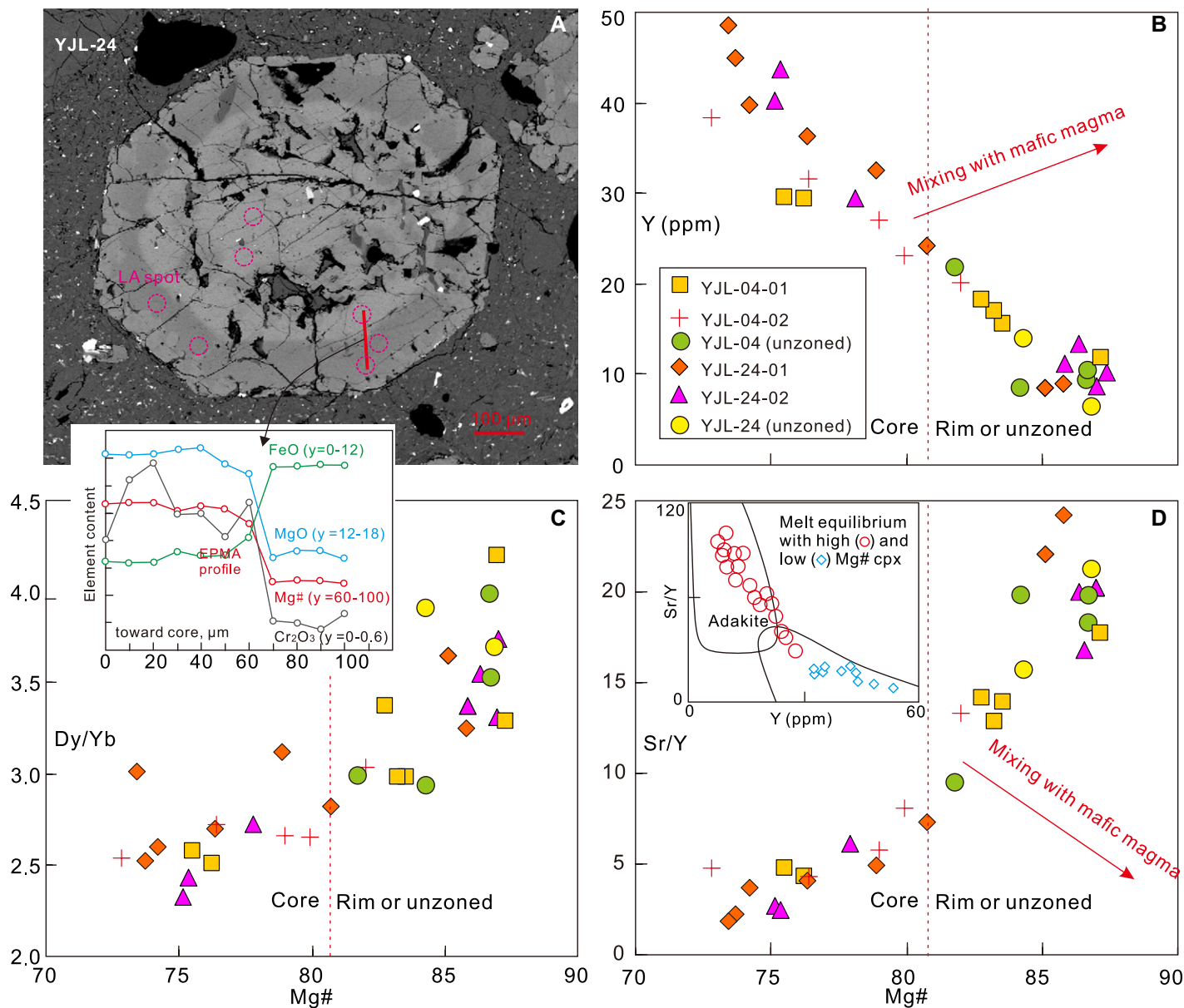
**Figure 2.** Geochemical diagrams of (A) Mg# versus  $\text{SiO}_2$ , (B) Sr/Y versus Y, (C) bulk-rock Sr-Nd isotopes, (D) zircon Hf-O isotopes for Eocene adakitic rocks (EARs) in central Tibet, (E) (La/Yb)<sub>N</sub> versus (Dy/Yb)<sub>N</sub>, and (F) trace-element distribution pattern. Published EAR data are listed in Table S7 (see footnote 1). Data sources: Mafic dikes (Chen et al., 2013), Cenozoic oceanic adakite (Castillo, 2012), and Songpan-Ganzi (SG) flysch (She et al., 2006). Because the Qiangtang upper crust (QUC) comprises mainly metagraywacke, as revealed by sedimentary xenoliths in Triassic S-type granites (Lu et al., 2017), Hf isotopic values of these xenoliths and S-type granites, for average  $\delta^{18}\text{O} = 14.9\text{‰}$  and bulk continental sediment (Spencer et al., 2014), are assumed to be the makeup of assimilated materials. QB—Qiangtang block; QUC—Qiangtang upper crust; UCC—upper continental crust.

inverse calculation indicated that the melt equilibrated with the high-Mg# rim cpx presents adakitic affinities (Fig. 3D). Meanwhile, the rare Eocene–Oligocene mafic dikes have higher Y and lower Sr/Y than the EARs (Fig. 2B). This further highlights that, if the primitive EARs were formed by anatexis of thickened lower continental crust followed by mixing with mantle-derived magma, the reverse cpx phenocrysts should have low-Mg# cores with higher Sr and Sr/Y than high-Mg# rims, opposite to the observed trend (Fig. 3). The low-Mg# core cpx may have been xenocrysts from the evolved mantle-derived magma represented by the mafic dikes. The compositional variation of

the reverse-zoned cpx phenocrysts is similar to that in high-Mg adakite in modern arcs, which is interpreted to reflect interactions between silicic melt of an eclogitized slab and mantle peridotite (Yogodzinski and Kelemen, 1998). Central Tibet has been an intracontinental block since the Early Cretaceous, and the geochemical features of the EARs are distinct from oceanic adakite (Fig. 2C; Fig. S4). Thus, the most feasible petrogenetic mechanism for the primitive EARs is melt originating from eclogitized continental crust that reacted with mantle peridotite during ascent.

Zircon crystallized from magmatic rocks directly derived from mantle or remelted such

rocks (i.e., mafic lower crust) has a narrow range of  $\delta^{18}\text{O}$  ( $5.3\text{‰} \pm 0.6\text{‰}$ ,  $2\sigma$ ), and this range remains nearly constant during fractional crystallization processes (Valley et al., 2005). In comparison, zircon with  $\delta^{18}\text{O}$  differing from mantle-like values indicates incorporation of supracrustal materials such as sediments that have interacted with the hydrosphere (10%–40%) or hydrothermally altered magmatic rocks (to 20%) (Valley et al., 2005; Spencer et al., 2014). As the SG has been covered by very thick (average  $\sim 8$  km) and extensive ( $\sim 3 \times 10^5$  km<sup>2</sup>) Triassic flysch sediment with no magmatism since the Early Jurassic, in the intracontinental subduction model, the rhyolitic



**Figure 3. Representative textural (backscattered electron images; see Fig. S2 for photomicrograph [see footnote 1]) and compositional complexities of clinopyroxene (cpx) in primitive Eocene adakitic rocks (EARs). Inset shows composition profile, where values (e.g., MgO [ $y = 12-18$ ]) refer to range of  $y$  axis. LA—laser ablation; EPMA—electron probe microanalysis.**

EARs were proposed to be pristine melts of subducted SG flysch, with most of them reacting with mantle peridotite to form the primitive EARs (Wang et al., 2008). Despite the fact that Sr-Nd isotopes of the EARs are similar to the SG flysch (although in themselves are not really distinctive of any particular source reservoir), the overall mantle-like  $\delta^{18}\text{O}$  values of zircon grains from the EARs, including those from the rhyolite, demonstrate a predominantly mantle-derived source (Fig. 2). A combination of literature data with our new results shows the EARs have similar isotope compositions, as well as good linear correlations between  $\text{SiO}_2$  (as a proxy of evolution) and major/trace elements and the aluminum saturation index (Fig. 2; Fig. S4), implying a genetic relation-

ship via fractional crystallization with minor assimilation of upper-crustal sediments.

Our new data support the interpretation that the source of EARs was eclogitized mafic lower-crustal materials. Their removal is necessary in order for the melts to interact with mantle peridotite along the way to the surface. The only nondynamic alternative, which is plausible but less likely, is that the crust-mantle transition beneath the Eocene QB was repeated following the earlier shortening events. There is no independent evidence for that in the geological record, but we cannot completely rule it out, as multiple Mohos have been described under other plateaus (Chapman et al., 2015). The foundering hypothesis explains the modern crustal composition of central Tibet (i.e., felsic and eclogite-

free) and also concurs with a recent high-resolution-based tomographic interpretation of the nature of high-velocity bodies located within the asthenosphere beneath the QB, which are more likely to be founded Tibetan lithosphere rather than the previously proposed continentally subducted Asian lithosphere (Chen et al., 2017b).

#### ROLE OF FOUNDERING IN BUILDING THE CENTRAL TIBETAN PLATEAU

The gravitational instability (i.e., eclogite) that we suspect drove the removal of lower crust to form adakitic melts could have formed by either high-pressure metamorphism during orogenic shortening or magmatic processes (e.g., Leech, 2001; Ducea, 2002, 2011). Orogenic shortening applies to the study area, as the EARs

formed after a prolonged magmatic lull, while the QB crust had experienced up to ~50% north-south shortening prior to the postulated foundering event (Fig. 4A; Kapp and DeCelles, 2019). The low post-45 Ma erosion rates together with the flat-lying EARs and weakly deformed early Eocene strata suggest the formation of EARs coincident with the achievement of low-relief topography and shortly postdating the end of upper-crustal shortening (Fig. S1; Rohrmann et al., 2012; Li et al., 2017). This can be explained by lithosphere removal, as numerical simulation predicts that, in collisional belts, lithospheric foundering results in broad and flat plateaus (Fig. 4B; Wang et al., 2015; Li et al., 2016). However, postfoundering surface uplift and exhumation in central Tibet, as the isotropic response to removal of dense lower lithosphere, were minimal according to the following lines of observations: (1) low post-45 Ma erosion rates, as indicated by the thermochronological data (Rohrmann et al., 2012); (2) little detritus from the QB being deposited in the Hoh Xil Basin since ca. 50 Ma (Li et al., 2017); and (3) approximately the same paleo-elevation for the QB from the Eocene to middle Oligocene,

based on stable-isotope paleoaltimetry (Xu et al., 2013). These observations imply that either the size of foundering blobs was small (a few kilometers; Ducea, 2011), and/or the lithosphere where the eclogite developed was rheologically weak (Wang et al., 2015). The latter seems more likely, given the EARs erupted over a large area within a short time period. The weak middle-lower crust of central Tibet is documented by geophysical data (e.g., Owens and Zandt, 1997; Yang et al., 2012) and is suggested to have already existed before the Cenozoic (Chen et al., 2017a; Kelly et al., 2020; and references therein), which provides an explanation for the localization of crustal shortening in central Tibet during the early time of India-Asia collision.

### CONCLUSION

Our study has ruled out the underthrust sediment hypothesis in an important tectonic debate that has regional specifics but global implications. We propose that the EARs in central Tibet are the manifestation of lower-crustal foundering and partial melting of the downgoing drip (Fig. 4). The lithosphere removal resulted in

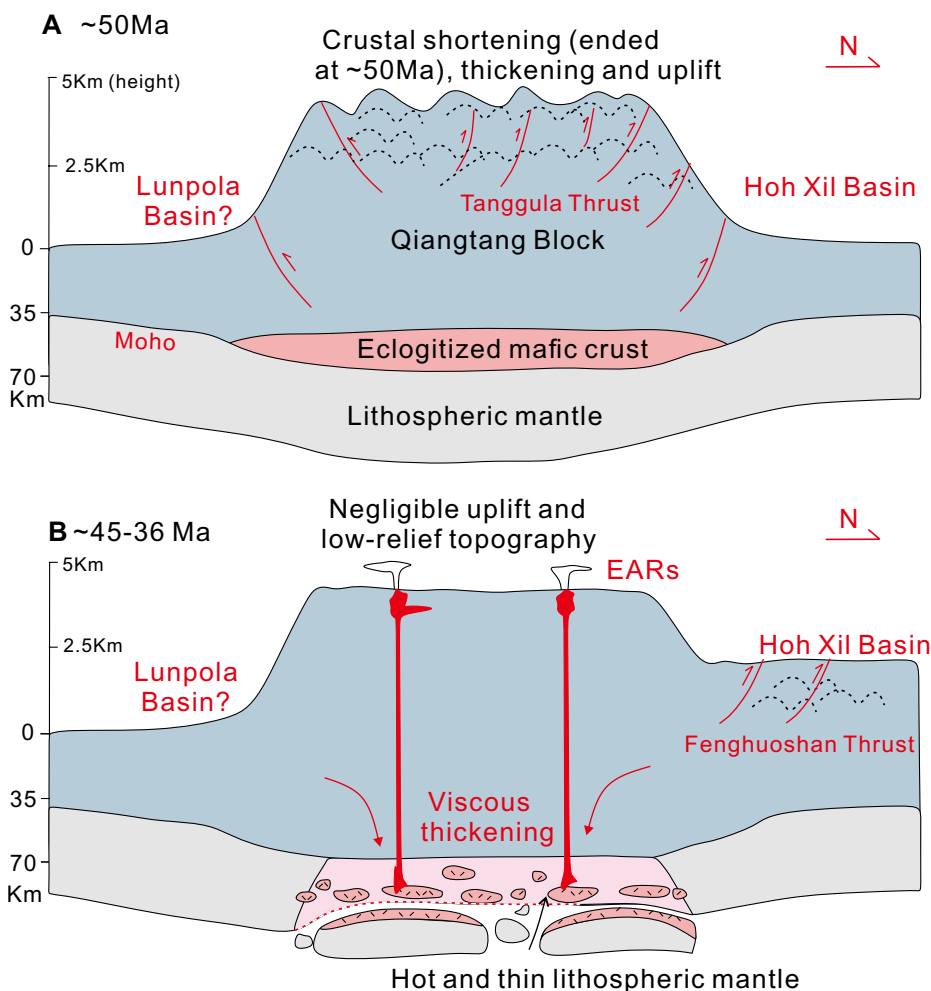
the establishment of a low-relief plateau surface but negligible further uplift. We emphasize the importance of searching for crustal melt signatures in the mantle in adakitic rocks in order to test for geodynamic processes. This goal can be achieved by designing spatially controlled targets (individual minerals or portions of minerals) that retain signatures otherwise mixed in the bulk rock.

### ACKNOWLEDGMENTS

We appreciate the insightful comments from Christopher Spencer, Josh Schwartz, an anonymous reviewer, and editor Gerald Dickens. We are grateful to Qiang Wang for providing samples, to Kangqiang Kang and Baodi Wang for their help in the fieldwork, and to Xiaoping Xia and Zhaochu Hu for their assistance on lab analyses. This work was funded by the National Key Research and Development Project of China (2016YFC0600304); the Second Tibetan Plateau Scientific Expedition and Research (STEP) (2019QZKK0702); the National Natural Science Foundation of China (41730427 41803030 and 41973027); the Fundamental Research Funds for the Central Universities (292019063); the U.S. National Science Foundation (grant EAR-1725002); the Romanian Executive Agency for Higher Education, Research, Development and Innovation (UEFISCDI) project PN-III-P4-ID-PCCF-2016-0014; and the 111 Project of the China Ministry of Science and Technology (BP0719021).

### REFERENCES CITED

- Castillo, P.R., 2012, Adakite petrogenesis: *Lithos*, v. 134, p. 304–316, <https://doi.org/10.1016/j.lithos.2011.09.013>.
- Chapman, A.D., Ducea, M.N., McQuarrie, N., Coble, M., Petrescu, L., and Hoffman, D., 2015, Constraints on plateau architecture and assembly from deep crustal xenoliths, northern Altiplano (SE Peru): *Geological Society of America Bulletin*, v. 127, p. 1777–1797, <https://doi.org/10.1130/B31206.1>
- Chapman, J.B., Scoggin, S.H., Kapp, P., Carrapa, B., Ducea, M.N., Worthington, J., and Gadoev, M., 2018, Mesozoic to Cenozoic magmatic history of the Pamir: *Earth and Planetary Science Letters*, v. 482, p. 181–192, <https://doi.org/10.1016/j.epsl.2017.10.041>.
- Chen, J.L., Wu, J.B., Xu, J.F., Dong, Y.H., Wang, B.D., and Kang, Z.Q., 2013, Geochemistry of Eocene high-Mg# adakitic rocks in the north Qiangtang terrane, central Tibet: Implications for early uplift of the plateau: *Geological Society of America Bulletin*, v. 125, p. 1800–1819, <https://doi.org/10.1130/B30755.1>.
- Chen, L., Capitanio, F.A., Liu, L., and Gerya, T.V., 2017a, Crustal rheology controls on the Tibetan Plateau formation during India-Asia convergence: *Nature Communications*, v. 8, p. 1–8, <https://doi.org/10.1038/ncomms15992>.
- Chen, M., Niu, F., Tromp, J., Lenardic, A., Lee, C.T., Cao, W., and Ribeiro, J., 2017b, Lithospheric foundering and underthrusting imaged beneath Tibet: *Nature Communications*, v. 8, p. 15659, <https://doi.org/10.1038/ncomms15659>.
- Ducea, M.N., 2002, Constraints on the bulk composition and root foundering rates of continental arcs: A California arc perspective: *Journal of Geophysical Research*, v. 107, 2304, <https://doi.org/10.1029/2001JB000643>.
- Ducea, M.N., 2011, Fingerprinting orogenic delamination: *Geology*, v. 39, p. 191–192, <https://doi.org/10.1130/focus022011.1>.
- Galve, A., Jiang, M., Hirn, A., Sapin, M., Laigle, M., De Voogd, B., Gallart, J., and Qian, H., 2006,



**Figure 4. Cartoon illustration of early Paleogene tectono-topographic evolution of central Tibet. Paleo-elevation is based on Xu et al. (2013). EARs—Eocene adakitic rocks.**

- Explosion seismic P and S velocity and attenuation constraints on the lower crust of the north-central Tibetan Plateau, and comparison with the Tethyan Himalayas: Implications on composition, mineralogy, temperature, and tectonic evolution: *Tectonophysics*, v. 412, p. 141–157, <https://doi.org/10.1016/j.tecto.2005.09.010>.
- Hacker, B.R., Gnos, E., Ratschbacher, L., Grove, M., McWilliams, M., Sobolev, S.V., Wan, J., and Wu, Z.H., 2000, Hot and dry deep crustal xenoliths from Tibet: *Science*, v. 287, p. 2463–2466, <https://doi.org/10.1126/science.287.5462.2463>.
- Jin, C., Liu, Q., Liang, W., Roberts, A.P., Sun, J., Hu, P., and Duan, Z., 2018, Magnetostratigraphy of the Fenghuoshan Group in the Hoh Xil Basin and its tectonic implications for India-Eurasia collision and Tibetan Plateau deformation: *Earth and Planetary Science Letters*, v. 486, p. 41–53, <https://doi.org/10.1016/j.epsl.2018.01.010>.
- Kapp, P., and DeCelles, P.G., 2019, Mesozoic–Cenozoic geological evolution of the Himalayan–Tibetan orogen and working tectonic hypotheses: *American Journal of Science*, v. 319, p. 159–254, <https://doi.org/10.2475/03.2019.01>.
- Kelemen, P.B., Hanghøj, K., and Greene, A.R., 2014, One view of the geochemistry of subduction-related magmatic arcs, with an emphasis on primitive andesite and lower crust, in Rudnick, R.L., ed., *Treatise on Geochemistry*, Volume 4: The Crust (2nd ed.): Amsterdam, Elsevier Science, p. 749–797, <https://doi.org/10.1016/B978-0-08-095975-7.00323-5>.
- Kelly, S., Beaumont, C., and Butler, J.P., 2020, Inherited terrane properties explain enigmatic post-collisional Himalayan–Tibetan evolution: *Geology*, v. 48, p. 8–14, <https://doi.org/10.1130/G46701.1>.
- Leech, M.L., 2001, Arrested orogenic development: Eclogitization, delamination, and tectonic collapse: *Earth and Planetary Science Letters*, v. 185, p. 149–159, [https://doi.org/10.1016/S0012-821X\(00\)00374-5](https://doi.org/10.1016/S0012-821X(00)00374-5).
- Li, L., Garzzone, C.N., Pullen, A., Zhang, P., and Li, Y., 2017, Late Cretaceous–Cenozoic basin evolution and topographic growth of the Hoh Xil Basin, central Tibetan Plateau: *Geological Society of America Bulletin*, v. 130, p. 499–521, <https://doi.org/10.1130/B31769.1>.
- Li, Z., Liu, M., and Gerya, T., 2016, Lithosphere delamination in continental collisional orogens: A systematic numerical study: *Journal of Geophysical Research: Solid Earth*, v. 121, p. 5186–5211, <https://doi.org/10.1002/2016JB013106>.
- Lu, L., Zhang, K.J., Yan, L.L., Jin, X., and Zhang, Y.X., 2017, Was Late Triassic Tanggula granitoid (central Tibet, western China) a product of melting of underthrust Songpan-Ganzi flysch sediments?: *Tectonics*, v. 36, p. 902–928, <https://doi.org/10.1002/2016TC004384>.
- Owens, T.J., and Zandt, G., 1997, Implications of crustal property variations for models of Tibetan Plateau evolution: *Nature*, v. 387, p. 37–43, <https://doi.org/10.1038/387037a0>.
- Rapp, R.P., and Watson, E.B., 1995, Dehydration melting of metabasalt at 8–32 kbar: Implications for continental growth and crust-mantle recycling: *Journal of Petrology*, v. 36, p. 891–931, <https://doi.org/10.1093/petrology/36.4.891>.
- Replumaz, A., Funicello, F., Reitano, R., Faccenna, C., and Balon, M., 2016, Asian collisional subduction: A key process driving formation of the Tibetan Plateau: *Geology*, v. 44, p. 943–946, <https://doi.org/10.1130/G38276.1>.
- Rohrmann, A., Kapp, P., Carrapa, B., Reiners, P.W., Guynn, J., Ding, L., and Heizler, M., 2012, Thermochronologic evidence for plateau formation in central Tibet by 45 Ma: *Geology*, v. 40, p. 187–190, <https://doi.org/10.1130/G32530.1>.
- She, Z., Ma, C., Mason, R., Li, J., Wang, G., and Lei, Y., 2006, Provenance of the Triassic Songpan-Ganzi flysch, west China: *Chemical Geology*, v. 231, p. 159–175, <https://doi.org/10.1016/j.chemgeo.2006.01.001>.
- Spencer, C.J., Cawood, P.A., Hawkesworth, C.J., Raub, T.D., Prave, A.R., and Roberts, N.M., 2014, Proterozoic onset of crustal reworking and collisional tectonics: Reappraisal of the zircon oxygen isotope record: *Geology*, v. 42, p. 451–454, <https://doi.org/10.1130/G35363.1>.
- Staisch, L.M., Niemi, N.A., Hong, C., Clark, M.K., Rowley, D.B., and Currie, B., 2014, A Cretaceous–Eocene depositional age for the Fenghuoshan Group, Hoh Xil Basin: Implications for the tectonic evolution of the northern Tibet Plateau: *Tectonics*, v. 33, p. 281–301, <https://doi.org/10.1002/2013TC003367>.
- Tapponnier, P., Xu, Z.Q., Roger, F., Meyer, B., Arnaud, N., Wittlinger, G., and Yang, J.S., 2001, Oblique stepwise rise and growth of the Tibet Plateau: *Science*, v. 294, p. 1671–1677, <https://doi.org/10.1126/science.105978>.
- Valley, J.W., Lackey, J.S., Cavosie, A.J., Clechenko, C.C., Spicuzza, M.J., Basei, M.A.S., and Peck, W.H., 2005, 4.4 billion years of crustal maturation: Oxygen isotope ratios of magmatic zircon: *Contributions to Mineralogy and Petrology*, v. 150, p. 561–580, <https://doi.org/10.1007/s00410-005-0025-8>.
- Wang, C., Dai, J., Zhao, X., Li, Y., Graham, S.A., He, D., Ran, B., and Meng, J., 2014, Outward-growth of the Tibetan Plateau during the Cenozoic: A review: *Tectonophysics*, v. 621, p. 1–43, <https://doi.org/10.1016/j.tecto.2014.01.036>.
- Wang, H., Currie, C.A., and DeCelles, P.G., 2015, Hinterland basin formation and gravitational instabilities in the central Andes: Constraints from gravity data and geodynamic models, in DeCelles, P.G., Ducea, M.N., Carrapa, B., and Kapp, P.A., eds., *Geodynamics of a Cordilleran Orogenic System: The Central Andes of Argentina and Northern Chile*: Geological Society of America Memoir 212, p. 387–406, [https://doi.org/10.1130/2015.1212\(19\)](https://doi.org/10.1130/2015.1212(19)).
- Wang, Q., Wyman, D.A., Xu, J., Dong, Y., Vasconcelos, P.M., Pearson, N., Wan, Y., Dong, H., Li, C., Yu, Y., and Zhu, T., 2008, Eocene melting of subducting continental crust and early uplifting of central Tibet: Evidence from central-western Qiangtang high-K calc-alkaline andesites, dacites and rhyolites: *Earth and Planetary Science Letters*, v. 272, p. 158–171, <https://doi.org/10.1016/j.epsl.2008.04.034>.
- Xu, J.F., Shinjo, R., Defant, M.J., Wang, Q., and Rapp, R.P., 2002, Origin of Mesozoic adakitic intrusive rocks in the Ningzhen area of east China: Partial melting of delaminated lower continental crust?: *Geology*, v. 30, p. 1111–1114, [https://doi.org/10.1130/0091-7613\(2002\)030<1111:OOMA IR>2.0.CO;2](https://doi.org/10.1130/0091-7613(2002)030<1111:OOMA IR>2.0.CO;2).
- Xu, Q., Ding, L., Zhang, L., Cai, F., Lai, Q., Yang, D., and Liu-Zeng, J., 2013, Paleogene high elevations in the Qiangtang terrane, central Tibetan Plateau: *Earth and Planetary Science Letters*, v. 362, p. 31–42, <https://doi.org/10.1016/j.epsl.2012.11.058>.
- Yang, Y., Ritzwoller, M.H., Zheng, Y., Shen, W., Levshin, A.L., and Xie, Z., 2012, A synoptic view of the distribution and connectivity of the mid-crustal low velocity zone beneath Tibet: *Journal of Geophysical Research: Solid Earth*, v. 117, B04303, <https://doi.org/10.1029/2011JB008810>.
- Yogodzinski, G.M., and Kelemen, P.B., 1998, Slab melting in the Aleutians: Implications of an ion probe study of clinopyroxene in primitive adakite and basalt: *Earth and Planetary Science Letters*, v. 158, p. 53–65, [https://doi.org/10.1016/S0012-821X\(98\)00041-7](https://doi.org/10.1016/S0012-821X(98)00041-7).

Printed in USA