

Sunquake and Moreton Wave

D. Beşliu-Ionescu^[1,2]

M. Mierlă^[1,3,4], **G. Mariş-Muntean**^[1]

[1] **Institutul de geodinamică "Sabba S. Ştefănescu"**,
19-21 Jean-Louis Calderon St., Bucureşti, România, RO-020032

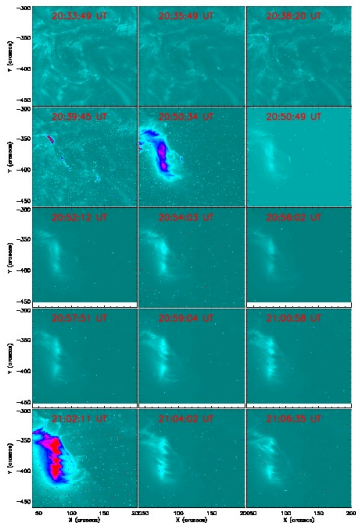
[2] **MoCA, School of Mathematical Sciences, Monash University**,
Clayton, Australia, 3800

[3] **Research Center for Atomic Physics and Astrophysics, Faculty of Physics**,
University of Bucharest, Măgurele, Romania

[4] **Royal Observatory of Belgium**,
Ringlaan 3, 1180 Brussels, Belgium

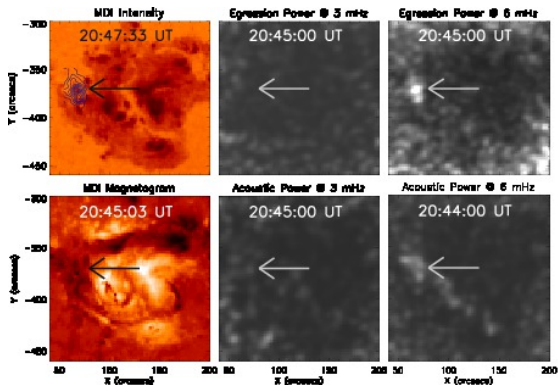
2 Oct 2012

29 Oct 2003



Solar Flare X10.0
 20:37 20:49 21:01
 $\beta\gamma\delta$ AR 10486

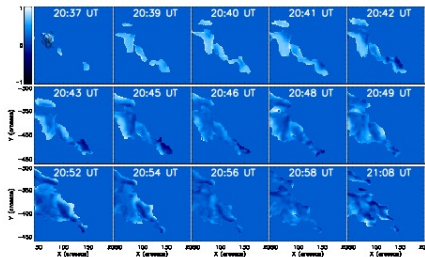
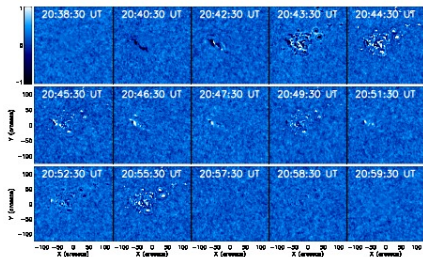
Seismic Emission



SunQuake

20:35 20:43 20:50
 2.3×10^{26} ergs
 (Donea and Lindsey, 2005)

MWL Analysis



(Beşliu-Ionescu, 2010)

WL – H α Doppler Maps

Chromospheric Shock – “Back-warming”
 (Donea, 2011)

Moreton Wave

1100–1200km/s

(Balasubramaniam et al., 2007)

Discussion

seismic emission is temporally & spatially correlated

- to SXR
- to central kernel in WL
- to chromospheric plasma displacements

Thank you!

Balasubramaniam, K., Pevtsov, A., and Neidig, D.: 2007,
Astrophys. J. **658**, 1372

Beşliu-Ionescu, D.: 2010, *Ph.D. thesis*, School of Mathematical
Sciences, Monash University

Donea, A.: 2011, *Space Science Reviews* **158**, 451

Donea, A.-C. and Lindsey, C.: 2005, *Astrophys. J.* **630**, 1168